



# Baltimore Neighborhood Indicators Alliance/ UB School of Criminal Justice

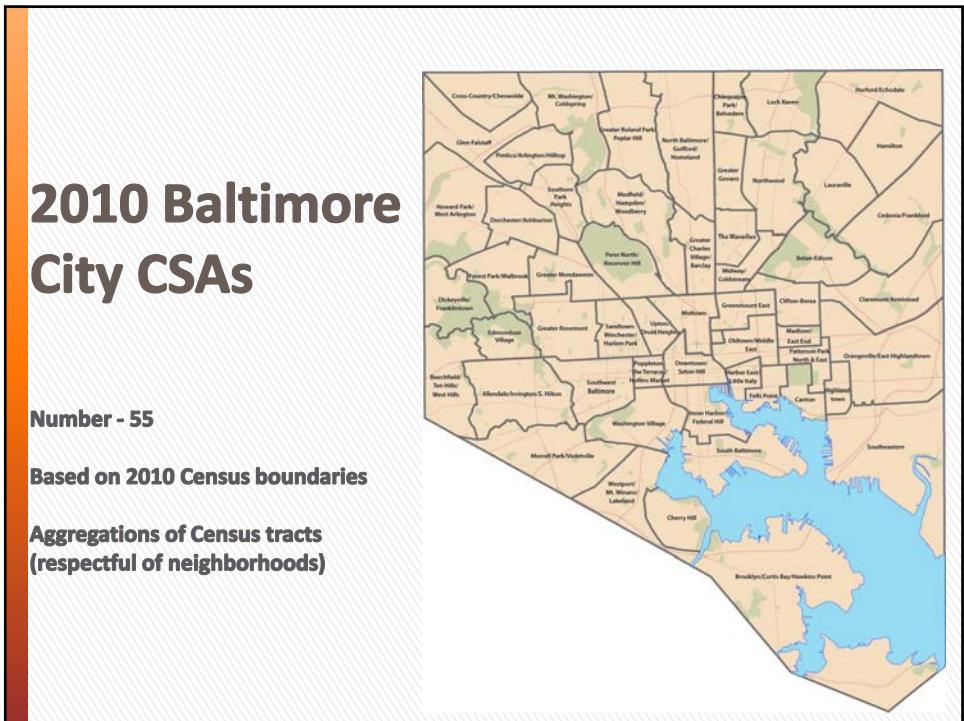
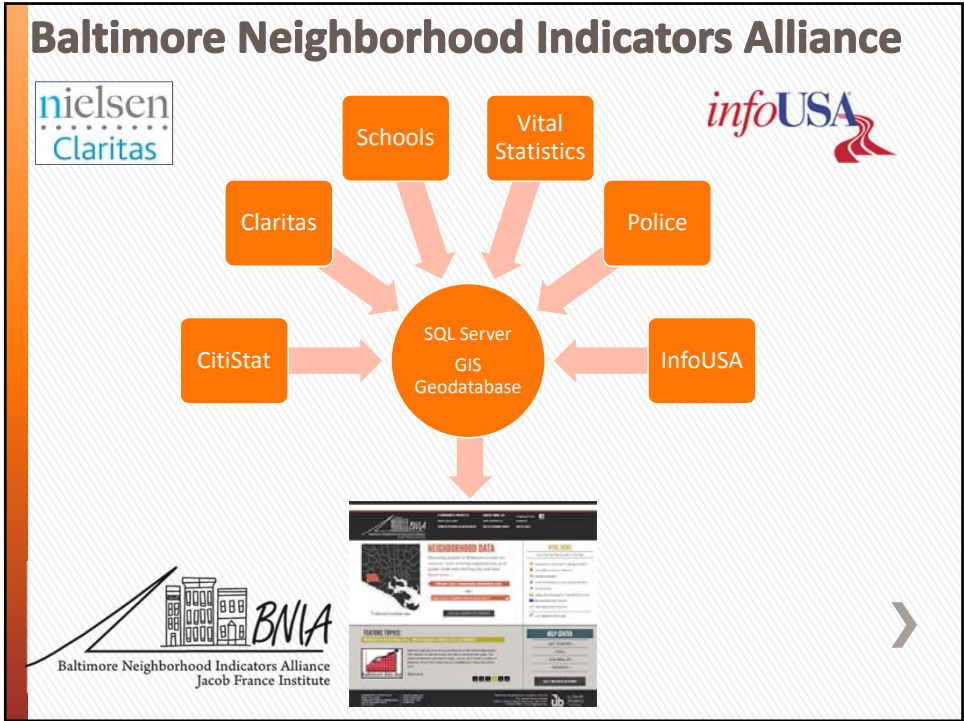
*McElderry Park Revitalization Coalition  
Byrne Innovation Grant*

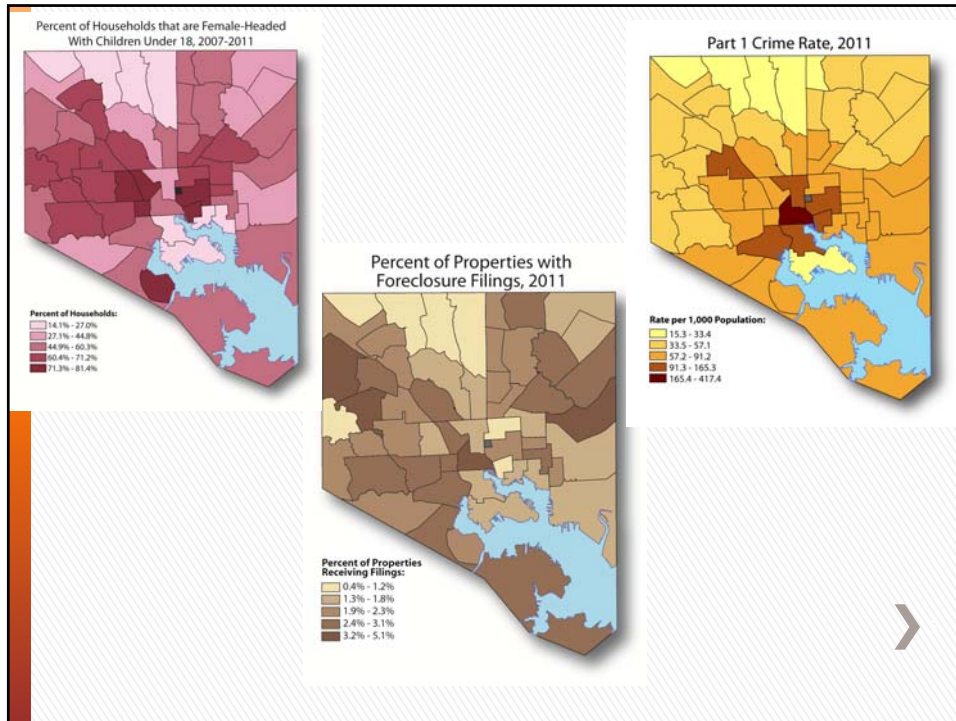



## Baltimore Neighborhood Indicators Alliance

- A resource in the Community
  - [www.bniajfi.org](http://www.bniajfi.org)
  - [www.facebook.com/bniajfi](https://www.facebook.com/bniajfi)
  - @bniajfi
- *Vital Signs*
  - Quality of life indicators for Baltimore communities
  - 10 years of data acquisition and analysis
  - Partnerships with data providers, stakeholders
- A resource Nationally
  - “Democratization of Data”







## BNIA-JFI

- ***Vital Signs 11***
    - Released ***Friday April 19<sup>th</sup>***
    - New indicators
    - Data stories
    - Updated website with new search capabilities
- <http://www.bniajfi.org/>
- ***Data Day 2013***
    - FREE one day conference
    - July 12th at the University of Baltimore

## **UB – School of Criminal Justice**

### Education and...**Research Expertise**

- » Practical and applied research focus
- » Identifies best-practices in crime prevention, policing, corrections & victim services
- » Works with community organizations and local government
- » Provides training and education for practitioners
- » Criminal justice program development, implementation, and evaluation



## **MPRC Research Tasks**

Multi-staged approach

Multi-partner approach

### **TASKS:**

- Strategic planning
- Data Steering committee
- Asset mapping
- Community information
- Evidence-based analyses



## MPRC Research Tasks – Strategic Planning

- *Task 1*

- > review previous neighborhood plans for the area
- > provide technical assistance to MPRC staff and partner members in the development of a strategic implementation plan



## MPRC Research Tasks – Data Steering Committee

- *Task 2*

- > Committee of research and data partners
  - + done research in the neighborhood
  - + can help frame the data analysis for subsequent implementation and evaluation
- > Catalogue existing studies and available data sets
- > Use relevant BNIA-JFI historical data (crime, education, housing, health, economic development, etc)
- > Present analyses to the data steering committee as well as at MPRC meetings
- > Report findings for strategic plan



## **MPRC Research Tasks – Asset Mapping**

- **Task 3**

- > meet with the critical MPRC partners to understand contributions in the area
- > identify the assets and needs of the community
- > Create a series of maps to be included in the final report



## **MPRC Research Tasks – Community Information**

- **Task 4**

- > SCJ will work with MPRC to prepare for and facilitate focus groups
  - + residents, community-based organizations and other key participants
- > Experiences and perceptions regarding the causes of pervasive crime issues facing the target area and potential solutions
- > Task 4a: Surveys (if applicable)



## Focus Groups

### Focus Group Discussion Topics:

- » Crime and disorder problems
- » Causes of problems
- » Potential solutions/strategies

### Focus Group Requirements:

- » Must be over 18
- » Resident of McElderry Park
- » Will be conducted early summer



## MPRC Research Tasks – Evidence-Based Analyses

### • *Task 5*

- > Use data, maps, focus group information to identify potential evidence-based solutions and innovative strategies
- > Also use literature review, examining best practices implemented in other cities
- > Review findings with MPRC members
- > Refine the initial strategy to develop a continuum of strategies to address the identified crime issues



## Questions?



*Seema D. Iyer, Ph.D.*  
[siver@ubalt.edu](mailto:siver@ubalt.edu)

*Matthew Kachura*  
[mkachura@ubalt.edu](mailto:mkachura@ubalt.edu)

Baltimore Neighborhood Indicators Alliance  
Jacob France Institute  
University of Baltimore

*Andrea Cantora, Ph.D.*  
[acantora@ubalt.edu](mailto:acantora@ubalt.edu)  
School of Criminal Justice  
College of Public Affairs  
University of Baltimore

Website: [www.bniajfi.org](http://www.bniajfi.org)  
Email: [bnia-jfi@ubalt.edu](mailto:bnia-jfi@ubalt.edu)  
Facebook: [www.facebook.com/bniajfi](http://www.facebook.com/bniajfi)  
Twitter: @bniajfi



The Jacob  
*france*  
Institute