

Baltimore City continues to make improving the health and lives of its residents a priority. In 2011, the City released the update of Community Health Profiles¹ for all CSAs as well as Healthy Baltimore 2015², a comprehensive health policy agenda and measures for tracking progress. In order to describe the health and well-being of City residents, BNIA-JFI currently tracks thirteen adult, juvenile, and infant health indicators for Baltimore City and its neighborhoods. The data is provided by the Maryland Department of Health and Mental Hygiene, Maryland Department of the Environment, Baltimore Substance Abuse Systems (BSAS), the Baltimore City Health Department, and the United States Bureau of the Census. Where possible, data is presented at the CSA and City level. For several indicators, data is only available at the zip code level. These health and well-being indicators and their change over the past several years are described below.

Safe Homes and Families

BNIA-JFI tracks two measures of safe homes and families: the number of children tested for the presence of lead in their blood and the percent of children who have elevated levels of lead in their blood³. Elevated levels of lead in the blood is toxic to many organs and tissues including heart, kidneys, bones, and the nervous system. In children, elevated levels of lead in the blood can lead to permanent learning and behavior disorders.

- In 2010, a total of 19,702 children in Baltimore City were tested for the presence of lead in the blood. The greatest numbers of children tested lived in Southwest Baltimore (506) and in Greater Rosemont (479).
- Since 2006, the number of children tested for elevated levels of blood lead have increased by 7.7%.
- From 2006 to 2010, the percentage of children who were tested for the presence of lead in their blood and were found to have elevated blood levels decreased by 3.2 percentage points from 4.8% in 2006 to 1.6% in 2010.
- The percentage of children who were tested for the presence of lead in their blood and were found to have elevated blood lead levels decreased by 0.2 percentage points from 1.8% in 2009 to 1.6% in 2010.

¹ For more information, visit <http://www.baltimorehealth.org/neighborhood.html>

² <http://www.baltimorehealth.org/healthybaltimore2015.html>

³ BNIA-JFI tracks the number of children 0 to 6 years old that are tested for elevated levels of blood lead as established by the Maryland Department of the Environment Lead Poisoning Prevention Program (<http://www.mde.state.md.us/programs/Land/LeadPoisoningPrevention/Pages/Programs/LandPrograms/LeadCoordination/index.aspx>).

- In 2010, the CSAs with the highest percentages of children with elevated levels of blood lead lived in Belair-Edison (7.5%), Sandtown-Winchester/Harlem Park (6.9%), Midway/Coldstream (6.1%), and Madison/East End (6.1%).
- The increasing number of children being tested for elevated blood lead levels and the decreasing percentage of children with elevated blood lead levels means that fewer children can be expected to suffer from the negative effects of blood lead poisoning in Baltimore City.

Individual and Family Poverty⁴

The percentage of persons and of families with related children under eighteen with incomes below the poverty line are used as measures to understand the level of suffering, need, and insufficiency within Baltimore City. Typically, neighborhoods with higher poverty levels require a greater level of services from the City, foundations, and other support organizations. This data comes from the United States Bureau of the Census and the 2006-2010 American Community Survey. While the overall level of both individual and family poverty has decreased in Baltimore City from 2000 to 2010, there still exists areas with poverty levels exceeding 25%.

- From 2000 to in between the years 2006-2010, the percentage of persons living in poverty decreased from 22.3% in 2000 to 21.3% in 2010.
- During the years 2006-2010, there are 21 CSAs where at least one in every four residents (25%) live in poverty.
- During the years 2006-2010, the CSAs with the highest poverty rates include Upton/Druid Heights (52.0%), Cherry Hill (47.9%), and Oldtown/Middle East (47.4%).
- The percentage of families with related children under eighteen in Baltimore City living in poverty decreased from 26.2% in 2000 to 24.6% in between the years 2006-2010.
- In between the years 2006-2010, there were 26 CSAs where at least one of every four families with children under eighteen lived in poverty.
- During the years 2006-2010, the CSAs with the highest rates of families with children living in poverty included Upton/Druid Heights (61.0%), Harbor East/Little Italy (54.8%), and Oldtown/Middle East (52.6%).

Maternal and Child Health

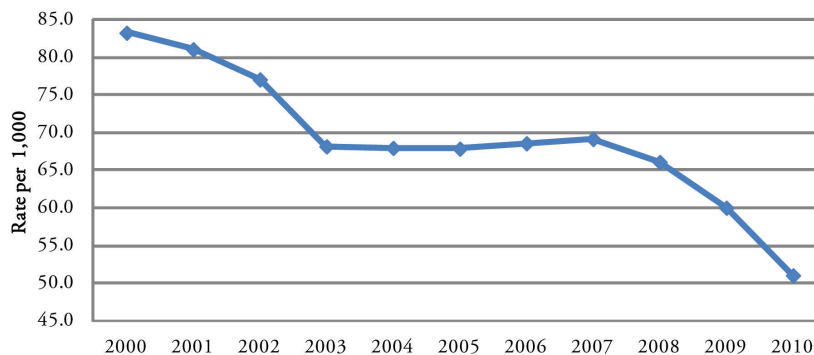
Good health begins with babies being born healthy. BNIA-JFI tracks four measures of maternal and child health. These include the percent of births where the mother received early prenatal care (within the first trimester); the percent of births delivered at term; the percent of babies born with a satisfactory birth weight; and teen birth rate. In 2010, the Maryland Certificate of Live birth was revised and a number of data items were added or modified in order to conform to national standards. Prenatal care was one of the items that

⁴ Source for the individual and family poverty indicators is the 2006-2010 American Community Survey (ACS).

were modified. On the earlier version of the birth certificate, which had been in use since 1989, birthing facilities were asked to report the month that prenatal care began. This information was collected from various sources and was in some cases an estimate. The current version of the certificate requires the birthing facility to report the month, day, and a year of the first prenatal care visit, as reported in the medical record. As a result of these changes, prenatal care rates based on the old and new versions of the certificates are not comparable. Additional information on this change can be found on the summary of changes/explanations section of the full Vital Signs 10 report and on the BNIA-JFI website.

- In 2010, the percentage of births where mothers received early prenatal care was 57.0%. The CSAs with the lowest percentage of mothers receiving early prenatal care were Orangeville/East Highlandtown (40.4%) and Midway/Coldstream (45.2%).
- From 2009 to 2010, the percentage of births delivered at term (37 to 42 weeks) in Baltimore City remained steady from 86.7% to 86.5%.
- From 2000 to 2010, the percentage of births delivered at term (37 to 42 weeks) has increased from 84.4% to 86.5%.
- From 2000 to 2010, the percentage of babies born with satisfactory birth weight (a birth weight of 5.5 pounds or more) has increased from 86.2% in 2000 to 88.3% in 2010.
- The teen birth rate in Baltimore City has declined from 83.3 in 2000 to 51.1 per 1,000 teens giving birth in 2010. This is a decrease of 32.2 births per 1,000 teens over the past ten years and mirrors historic lows nationally in teen births⁵.

Teen Birth Rate, 2000-2010



- The teen birth rate in Baltimore City decreased from 60.1 per 1,000 teens giving birth in 2009 to 51.1 in 2010. In only two CSAs, at least one in ten teens gave birth in 2010. These CSAs were Brooklyn/Curtis Bay/Hawkins Point and Orangeville/East Highlandtown.

Access to Preventative Health Care

Access to preventative health care is an important issue in Baltimore City. Without access to preventative care, residents in Baltimore City are more susceptible to illness and preventable illnesses that can become life-threatening. In 2010, BNIA-JFI tracked two indicators: the number of children hospitalized for asthma; and

⁵ The Centers for Disease Control and Prevention reported that teen births hit an all-time low in 2010. There were 34.4 births per 1,000 women ages 15 to 19, a 9 percent drop from the year before.

the percent of persons with vaccine-preventable diseases (per 10,000 persons). Due to data availability and restrictions on usage, these indicators are only available at the zip code level.

- From 2009 to 2010, the number of children hospitalized for asthma decreased from 1,071 to 751. This is a decrease of nearly 30%.
- In Baltimore City, the number of children hospitalized for asthma has decreased from 1,034 in 2000 to 751 in 2010. This is a decrease of 27.4%.
- In Baltimore City, the percentage of persons with vaccine-preventable diseases has decreased from 13.4% in 2000 to 4.9% in 2010. This is a decrease of 8.5 percentage points over the decade. However, from 2009 to 2010, the percentage of persons with vaccine-preventable diseases increased from 1.6% to 4.9%. This is an increase of 3.4 percentage points from 2009 to 2010.

Drug Treatment

The number of persons receiving treatment for addiction to illegal substances is used as a measure of the drug-related behaviors in the City. This indicator does not fully capture the extent of the problem in Baltimore City for two reasons. First, the indicator only captures persons with either the financial resources or willingness to seek treatment. Second, the number of persons receiving treatment is limited to the total number of available spaces for persons to be treated. Both of these reasons translate into a conservative figure for the drug addiction problem in Baltimore City. The data is provided to BNIA-JFI from the Baltimore Substance Abuse System (BSAS).

- In 2010, 18,703 persons were receiving treatment for addiction to drugs.
- From 2009 to 2010, the number of persons receiving treatment for drugs increased by 170 persons or 0.9%.
- From 2000 to 2010, the number of persons receiving treatment for addiction to drugs increased by 2,184 persons or 13.2%.

Vital Signs 10 Summary				
Indicator	2000 to 2010		2009 to 2010	
	Decreases	Increases	Decreases	Increases
Percent of Children with Elevated Blood Lead Levels	<ol style="list-style-type: none"> 1. Penn North/Reservoir Hill 2. Clifton-Berea 3. Greater Mondawmin (2006-2010) 	<ol style="list-style-type: none"> 1. Belair-Edison (2006-2010) 	<ol style="list-style-type: none"> 1. Clifton-Berea 2. Southern Park Heights 3. Penn North/Reservoir Hill 	<ol style="list-style-type: none"> 1. Belair-Edison 2. Midway/Coldstream 3. Southwest Baltimore
Teen Birth Rate	<ol style="list-style-type: none"> 1. Downtown/Seton Hill 2. Brooklyn/Curtis Bay/Hawkins Point 3. Cherry Hill 	<ol style="list-style-type: none"> 1. Canton 2. Highlandtown 3. Washington/Village 	<ol style="list-style-type: none"> 1. Cherry Hill 2. Downtown/Seton Hill 3. Hamilton 	<ol style="list-style-type: none"> 1. Highlandtown 2. Patterson Park North & East 3. Brooklyn/Curtis Bay/Hawkins Point
Number of Children Hospitalized for Asthma	<ol style="list-style-type: none"> 1. 21211 2. 21234 3. 21207 	<ol style="list-style-type: none"> 1. 21214 2. 21205 3. 21231 	<ol style="list-style-type: none"> 1. 21287 2. 21208 3. 21222 4. 21226 	<ol style="list-style-type: none"> 1. 21201 2. 21209 3. 21223
Number of Drug Treatment Clients	<ol style="list-style-type: none"> 1. 21236 2. 21222 3. 21228 	<ol style="list-style-type: none"> 1. 21226 2. 21225 3. 21215 	<ol style="list-style-type: none"> 1. 21251 2. 21222 3. 21209 	<ol style="list-style-type: none"> 1. 21210 2. 21234 3. 21239

Number of Children Tested for Presence of Lead in their Blood

The number of children ages 0-6 tested for the presence of lead in their blood.

Source: State Department of the Environment, Lead Poisoning Prevention Program

Community Statistical Area (CSA)	2006	2007	2008	2009	2010*	09-10 Change	06-10 Change
Allendale/Irvington/S. Hilton	355	218	73	277	386	39.4	8.7
Beechfield/Ten Hills/West Hills	0	114	85	0	0	-	-
Belair-Edison	318	0	50	0	200	-	-37.1
Brooklyn/Curtis Bay/Hawkins Point	0	232	226	0	0	-	-
Canton	34	100	109	91	96	5.5	182.4
Cedonia/Frankford	247	166	303	118	240	103.4	-2.8
Cherry Hill	216	223	248	73	198	171.2	-8.3
Chinquapin Park/Belvedere	0	0	124	83	146	75.9	-
Claremont/Armistead	137	231	225	242	240	-0.8	75.2
Clifton-Berea	283	272	149	218	0	-100.0	-100.0
Cross-Country/Cheswolde	145	0	0	398	408	2.5	181.4
Dickeyville/Franklintown	0	112	106	106	110	3.8	-
Dorchester/Ashburton	271	167	233	150	0	-100.0	-100.0
Downtown/Seton Hill	10	51	287	57	49	-14.0	390.0
Edmondson Village	110	0	46	135	123	-8.9	11.8
Fells Point	108	87	193	181	137	-24.3	26.9
Forest Park/Walbrook	308	296	222	237	109	-54.0	-64.6
Glen-Falstaff	275	80	0	79	164	107.6	-40.4
Greater Charles Village/Barclay	0	0	44	179	84	-53.1	-
Greater Govans	225	277	102	0	54	-	-76.0
Greater Mondawmin	175	110	225	38	203	434.2	16.0
Greater Roland Park/Poplar Hill	50	55	5	54	132	144.4	164.0
Greater Rosemont	629	605	354	216	479	121.8	-23.8
Greenmount East	283	193	261	286	183	-36.0	-35.3
Hamilton	89	84	0	164	64	-61.0	-28.1
Harbor East/Little Italy	NA	NA	NA	NA	199	NA	NA
Harford/Echodale	270	62	235	238	156	-34.5	-42.2
Highlandtown	79	145	0	44	113	156.8	43.0
Howard Park/West Arlington	110	0	142	134	0	-100.0	-100.0
Inner Harbor/Federal Hill	164	130	270	205	232	13.2	41.5
Jonestown/Oldtown	50	0	211	48	NA	NA	NA
Lauraville	208	91	74	144	145	0.7	-30.3
Loch Raven	115	96	279	129	0	-100.0	-100.0
Madison/East End	388	401	207	385	377	-2.1	-2.8
Medfield/Hampden/Woodberry	237	152	134	67	156	132.8	-34.2
Midtown*	19	72	25	53	0	-100.0	-100.0
Midway/Coldstream	357	323	133	0	114	-	-68.1
Morrell Park/Violetville	0	191	392	118	65	-44.9	-
Mt. Washington/Coldspring	127	116	185	103	90	-12.6	-29.1
North Baltimore/Guilford/Homeland	31	27	288	266	239	-10.2	671.0
Northwood	189	168	0	101	170	68.3	-10.1
Oldtown/Middle East	NA	NA	NA	NA	171	NA	NA
Orangeville/East Highlandtown	79	0	134	235	0	-100.0	-100.0
Patterson Park North & East	444	431	259	144	410	184.7	-7.7
Penn North/Reservoir Hill	72	276	13	91	88	-3.3	22.2
Perkins/Middle East	112	85	119	55	NA	NA	NA
Pimlico/Arlington/Hilltop	347	321	267	250	0	-100.0	-100.0
Poppleton/The Terraces/Hollins Market	141	189	0	0	88	-	-37.6
Sandtown-Winchester/Harlem Park	519	313	475	187	203	8.6	-60.9
South Baltimore	80	108	163	66	121	83.3	51.3
Southeastern	0	0	117	219	202	-7.8	-
Southern Park Heights	587	362	107	324	0	-100.0	-100.0
Southwest Baltimore	645	705	337	179	506	182.7	-21.6
The Waverlies	117	0	0	115	100	-13.0	-14.5
Upton/Druid Heights*	378	268	73	129	85	-34.1	-77.5
Washington Village	42	33	61	69	0	-100.0	-100.0
Westport/Mt. Winans/Lakeland	166	63	101	0	208	-	25.3
Baltimore City	18,286	17,781	18,682	19,043	19,702	3.5	7.7

NA = Data not available due to major modifications in Census geographies from 2000 to 2010.

* 2010 data using new 2010 CSA boundaries. CSA boundaries were modified slightly due to modifications in Census geographies from 2000 to 2010.

For more information, visit <http://www.bniajfi.org>.

Percent of Children with Elevated Blood Lead Levels

Percent of children age 0-6 tested for blood lead and found to have elevated blood lead levels.

Source: State Department of the Environment, Lead Poisoning Prevention Program

Community Statistical Area (CSA)	2006	2007	2008	2009	2010*	09-10 Change	06-10 Change
Allendale/Irvington/S. Hilton	5.6	3.7	0.0	0.0	0.0	0.0	-5.6
Beechfield/Ten Hills/West Hills	0.0	0.0	0.0	0.0	0.0	0.0	0.0
Belair-Edison	6.6	0.0	0.0	0.0	7.5	7.5	0.9
Brooklyn/Curtis Bay/Hawkins Point	0.0	0.0	0.0	0.0	0.0	0.0	0.0
Canton	0.0	0.0	0.0	0.0	0.0	0.0	0.0
Cedonia/Frankford	0.0	3.0	3.3	0.0	0.0	0.0	0.0
Cherry Hill	2.8	0.0	0.0	0.0	0.0	0.0	-2.8
Chinquapin Park/Belvedere	0.0	0.0	6.5	0.0	0.0	0.0	0.0
Claremont/Armistead	0.0	0.0	0.0	0.0	0.0	0.0	0.0
Clifton-Berea	16.6	11.8	12.1	6.1	0.0	-6.1	-16.6
Cross-Country/Cheswolde	0.0	0.0	0.0	0.0	0.0	0.0	0.0
Dickeyville/Franklinton	0.0	0.0	0.0	0.0	0.0	0.0	0.0
Dorchester/Ashburton	5.2	3.6	6.0	1.7	0.0	-1.7	-5.2
Downtown/Seton Hill	0.0	0.0	5.6	0.0	0.0	0.0	0.0
Edmondson Village	8.2	0.0	0.0	0.0	0.0	0.0	-8.2
Fells Point	4.6	0.0	2.6	0.0	0.0	0.0	-4.6
Forest Park/Walbrook	7.1	4.4	2.7	3.5	4.6	1.1	-2.6
Glen-Falstaff	2.2	0.0	0.0	0.0	0.0	0.0	-2.2
Greater Charles Village/Barclay	0.0	0.0	0.0	1.4	0.0	-1.4	0.0
Greater Govans	7.1	5.1	4.9	0.0	0.0	0.0	-7.1
Greater Mondawmin	13.7	5.5	7.6	0.0	0.0	0.0	-13.7
Greater Roland Park/Poplar Hill	0.0	0.0	0.0	0.0	0.0	0.0	0.0
Greater Rosemont	6.0	6.1	2.8	2.9	1.0	-1.8	-5.0
Greenmount East	11.7	8.8	5.0	4.9	3.8	-1.1	-7.8
Hamilton	0.0	0.0	0.0	0.0	0.0	0.0	0.0
Harbor East/Little Italy	NA	NA	NA	NA	0.0	NA	NA
Harford/Echodale	0.0	0.0	0.0	0.0	0.0	0.0	0.0
Highlandtown	0.0	5.5	0.0	0.0	0.0	0.0	0.0
Howard Park/West Arlington	4.6	0.0	0.0	0.0	0.0	0.0	-4.6
Inner Harbor/Federal Hill	0.0	0.0	0.0	0.0	0.0	0.0	0.0
Jonestown/Oldtown	0.0	0.0	6.6	0.0	NA	NA	NA
Lauraville	0.0	0.0	0.0	0.0	0.0	0.0	0.0
Loch Raven	0.0	0.0	0.0	0.0	0.0	0.0	0.0
Madison/East End	12.6	12.5	12.6	7.8	6.1	-1.7	-6.5
Medfield/Hampden/Woodberry	3.4	4.0	5.2	0.0	0.0	0.0	-3.4
Midtown*	0.0	0.0	0.0	0.0	0.0	0.0	0.0
Midway/Coldstream	10.4	6.2	6.0	0.0	6.1	6.1	-4.2
Morrell Park/Violetville	0.0	0.0	0.0	0.0	0.0	0.0	0.0
Mt. Washington/Coldspring	0.0	0.0	2.7	0.0	0.0	0.0	0.0
North Baltimore/Guilford/Homeland	0.0	0.0	3.1	0.0	0.0	0.0	0.0
Northwood	0.0	0.0	0.0	0.0	0.0	0.0	0.0
Oldtown/Middle East	NA	NA	NA	NA	0.0	NA	NA
Orangeville/East Highlandtown	0.0	0.0	0.0	0.0	0.0	0.0	0.0
Patterson Park North & East	12.6	5.1	5.0	3.2	3.4	0.2	-9.2
Penn North/Reservoir Hill	16.7	9.4	0.0	2.0	0.0	-2.0	-16.7
Perkins/Middle East	4.5	0.0	6.7	0.0	NA	NA	NA
Pimlico/Arlington/Hilltop	4.9	4.4	1.9	0.0	0.0	0.0	-4.9
Poppleton/The Terraces/Hollins Market	0.0	2.7	0.0	0.0	0.0	0.0	0.0
Sandtown-Winchester/Harlem Park	11.2	11.2	4.4	3.5	6.9	3.4	-4.3
South Baltimore	0.0	0.0	0.0	0.0	0.0	0.0	0.0
Southeastern	0.0	0.0	0.0	0.0	0.0	0.0	0.0
Southern Park Heights	3.8	3.3	4.7	3.2	0.0	-3.2	-3.8
Southwest Baltimore	14.0	9.5	3.6	1.4	5.3	3.9	-8.6
The Waverlies	4.3	0.0	0.0	0.0	0.0	0.0	-4.3
Upton/Druid Heights*	5.6	6.7	11.0	1.7	0.0	-1.7	-5.6
Washington Village	0.0	0.0	0.0	0.0	0.0	0.0	0.0
Westport/Mt. Winans/Lakeland	3.0	0.0	0.0	0.0	0.0	0.0	-3.0
Baltimore City	4.8	3.7	3.1	1.8	1.6	-0.2	-3.2

NA = Data not available due to major modifications in Census geographies from 2000 to 2010.

* 2010 data using new 2010 CSA boundaries. CSA boundaries were modified slightly due to modifications in Census geographies from 2000 to 2010.

For more information, visit <http://www.bniajfi.org>.

Percent of Individuals Living Below the Poverty Line

Percent of the population living below the federal poverty threshold.

Source: U.S. Census, American Community Survey (ACS)

Community Statistical Area (CSA)	2000	2006- 2010**†
Allendale/Irvington/S. Hilton	23.1	19.0
Beechfield/Ten Hills/West Hills	10.5	10.7
Belair-Edison	13.4	14.9
Brooklyn/Curtis Bay/Hawkins Point	29.9	25.2
Canton	14.5	5.5
Cedonia/Frankford	17.9	15.5
Cherry Hill	43.2	47.9
Chinquapin Park/Belvedere	13.7	14.8
Claremont/Armistead	28.1	19.3
Clifton-Berea	32.3	25.2
Cross-Country/Cheswolde	9.0	10.6
Dickeyville/Franklinton	27.2	20.0
Dorchester/Ashburton	19.3	12.3
Downtown/Seton Hill	42.4	36.4
Edmondson Village	15.5	16.1
Fells Point	14.1	18.3
Forest Park/Walbrook	22.0	22.2
Glen-Falstaff	16.2	18.6
Greater Charles Village/Barclay	31.9	31.1
Greater Govans	16.3	16.2
Greater Mondawmin	26.0	22.4
Greater Roland Park/Poplar Hill	7.8	4.9
Greater Rosemont	26.2	31.7
Greenmount East	37.1	34.3
Hamilton	8.3	8.3
Harbor East/Little Italy	NA	41.8
Harford/Echodale	12.0	10.6
Highlandtown	21.4	19.5
Howard Park/West Arlington	13.6	16.2
Inner Harbor/Federal Hill	15.0	14.0
Jonestown/Oldtown	50.5	NA
Lauraville	10.4	8.5
Loch Raven	9.9	14.1
Madison/East End	34.8	27.8
Medfield/Hampden/Woodberry	14.1	13.0
Midtown*	27.6	26.5
Midway/Coldstream	24.9	25.3
Morrell Park/Violetville	11.1	20.3
Mt. Washington/Coldspring	7.5	7.0
North Baltimore/Guilford/Homeland	13.7	12.5
Northwood	10.1	9.5
Oldtown/Middle East	NA	47.4
Orangeville/East Highlandtown	20.6	16.8
Patterson Park North & East	27.0	23.6
Penn North/Reservoir Hill	35.1	30.3
Perkins/Middle East	45.4	NA
Pimlico/Arlington/Hilltop	26.7	28.8
Poppleton/The Terraces/Hollins Market	40.2	36.0
Sandtown-Winchester/Harlem Park	37.0	33.2
South Baltimore	12.7	8.1
Southeastern	36.1	24.8
Southern Park Heights	31.7	28.3
Southwest Baltimore	35.6	33.9
The Waverlies	22.8	28.0
Upton/Druid Heights*	47.4	52.0
Washington Village	27.2	25.2
Westport/Mt. Winans/Lakeland	24.3	19.4
Baltimore City	22.9	21.3

NA = Data not available due to major modifications in Census geographies from 2000 to 2010.

* 2010 data using new 2010 CSA boundaries. CSA boundaries were modified slightly due to modifications in Census geographies from 2000 to 2010.

† 2000 Census data not directly comparable to 2006-2010 ACS data.

For more information, visit <http://www.bniajfi.org>.

Percent of Families with Children Under 18 Living Below the Poverty Line

Percent of families with related children under the age of 18 living below the federal poverty threshold.

Source: U.S. Census, American Community Survey (ACS)

Community Statistical Area (CSA)	2000	2006- 2010**†
Allendale/Irvington/S. Hilton	25.0	20.8
Beechfield/Ten Hills/West Hills	11.0	12.0
Belair-Edison	14.7	16.8
Brooklyn/Curtis Bay/Hawkins Point	41.0	30.7
Canton	29.8	3.8
Cedonia/Frankford	20.4	17.0
Cherry Hill	47.7	49.2
Chinquapin Park/Belvedere	16.0	14.3
Claremont/Armistead	34.7	21.9
Clifton-Berea	40.3	32.6
Cross-Country/Cheswolde	7.1	15.5
Dickeyville/Franklinton	24.6	25.6
Dorchester/Ashburton	23.9	16.3
Downtown/Seton Hill	53.4	38.3
Edmondson Village	15.7	26.0
Fells Point	14.3	28.5
Forest Park/Walbrook	27.8	29.9
Glen-Falstaff	15.8	21.5
Greater Charles Village/Barclay	32.9	14.9
Greater Govans	14.8	18.2
Greater Mondawmin	28.3	28.8
Greater Roland Park/Poplar Hill	1.5	0.0
Greater Rosemont	28.9	37.7
Greenmount East	37.9	41.9
Hamilton	9.1	11.2
Harbor East/Little Italy	NA	54.8
Harford/Echodale	13.1	10.3
Highlandtown	28.4	29.7
Howard Park/West Arlington	18.0	19.1
Inner Harbor/Federal Hill	18.7	9.2
Jonestown/Oldtown	50.1	NA
Lauraville	10.4	5.6
Loch Raven	9.1	13.0
Madison/East End	43.3	39.6
Medfield/Hampden/Woodberry	17.5	13.5
Midtown*	37.2	14.0
Midway/Coldstream	28.3	29.5
Morrell Park/Violetville	8.5	22.3
Mt. Washington/Coldspring	2.0	4.7
North Baltimore/Guilford/Homeland	4.9	7.0
Northwood	9.7	9.4
Oldtown/Middle East	NA	52.6
Orangeville/East Highlandtown	24.0	22.4
Patterson Park North & East	31.7	27.6
Penn North/Reservoir Hill	41.3	33.6
Perkins/Middle East	52.8	NA
Pimlico/Arlington/Hilltop	30.3	35.7
Poppleton/The Terraces/Hollins Market	46.1	36.0
Sandtown-Winchester/Harlem Park	40.2	40.6
South Baltimore	16.0	10.3
Southeastern	46.5	27.6
Southern Park Heights	34.9	35.9
Southwest Baltimore	38.5	37.2
The Waverlies	29.1	30.2
Upton/Druid Heights*	52.4	61.0
Washington Village	24.4	20.9
Westport/Mt. Winans/Lakeland	29.7	23.4
Baltimore City	26.2	24.6

NA = Data not available due to major modifications in Census geographies from 2000 to 2010.

* 2010 data using new 2010 CSA boundaries. CSA boundaries were modified slightly due to modifications in Census geographies from 2000 to 2010.

† 2000 Census data not directly comparable to 2006-2010 ACS data.

For more information, visit <http://www.bniajfi.org>.

Percent of Births Where Mother Received Early Prenatal Care

The percentage of births where the mother received prenatal care in the first trimester of pregnancy that year.

Source: Maryland Department of Health and Mental Hygiene (DHMH)

Community Statistical Area (CSA)	2000	2001	2002	2003	2004	2005	2006	2007	2008	2009	2010*
Allendale/Irvington/S. Hilton	73.6	68.9	77.2	78.3	71.8	74.2	79.7	79.3	77.5	79.4	51.9
Beechfield/Ten Hills/West Hills	82.0	85.7	82.8	82.0	77.7	79.1	88.0	81.0	81.4	81.8	64.3
Belair-Edison	71.9	71.4	71.1	68.9	73.7	75.0	73.0	79.4	70.2	74.9	63.9
Brooklyn/Curtis Bay/Hawkins Point	67.0	69.3	79.6	73.8	65.0	76.0	72.0	66.4	76.5	72.1	50.9
Canton	89.1	93.2	89.4	83.2	89.0	80.4	91.3	87.0	89.8	91.2	73.9
Cedonia/Frankford	72.5	74.0	74.0	80.7	76.5	73.7	78.8	74.0	74.7	77.4	56.6
Cherry Hill	63.0	61.1	74.3	69.5	66.5	69.9	66.5	63.6	68.3	71.3	57.2
Chinquapin Park/Belvedere	86.9	78.2	82.1	80.4	75.2	79.0	73.0	79.7	77.1	78.5	63.9
Claremont/Armistead	70.9	67.2	83.2	66.4	69.6	75.7	69.9	77.7	74.8	74.8	47.2
Clifton-Berea	61.2	61.1	58.2	56.1	66.5	71.9	70.3	67.9	60.3	71.8	52.2
Cross-Country/Cheswolde	85.6	92.4	95.2	95.1	91.3	90.0	91.4	92.4	88.8	93.1	60.2
Dickeyville/Franklintown	73.0	85.7	80.8	83.9	77.6	76.7	80.4	81.0	78.9	81.4	63.6
Dorchester/Ashburton	76.9	78.3	73.4	80.9	71.2	76.7	77.6	70.6	73.9	78.0	56.4
Downtown/Seton Hill	74.3	73.7	69.1	84.9	80.6	76.0	80.9	86.0	85.1	79.5	69.6
Edmondson Village	71.5	77.1	76.1	73.4	77.4	76.5	83.9	74.4	79.0	77.7	62.6
Fells Point	63.6	65.6	74.4	66.7	72.8	72.7	67.1	75.2	73.4	83.5	59.1
Forest Park/Walbrook	66.9	74.2	71.3	69.2	81.1	69.1	75.2	71.8	75.9	73.0	52.8
Glen-Falstaff	83.5	78.3	79.9	84.2	85.0	82.1	84.6	78.5	73.0	80.2	56.4
Greater Charles Village/Barclay	75.0	73.8	77.9	70.3	74.8	81.5	75.9	75.2	79.1	77.1	56.2
Greater Govans	74.2	71.7	73.0	75.8	76.1	76.7	78.6	67.8	68.5	75.7	61.0
Greater Mondawmin	69.3	72.5	70.5	57.4	70.8	71.4	68.3	67.2	63.7	68.4	49.6
Greater Roland Park/Poplar Hill	94.0	90.2	100.0	95.2	92.3	88.2	89.2	88.9	81.5	88.7	74.3
Greater Rosemont	63.9	68.2	78.2	69.5	70.3	72.5	69.8	67.6	70.1	74.2	52.3
Greenmount East	53.4	52.8	61.3	56.5	61.6	65.6	67.2	74.4	66.4	66.5	48.6
Hamilton	83.0	86.5	84.7	81.9	83.9	75.0	84.5	76.9	74.7	82.8	68.6
Harbor East/Little Italy	NA	NA	NA	NA	NA	NA	NA	NA	NA	NA	61.7
Harford/Echodale	83.8	82.1	86.1	80.2	84.9	77.2	81.0	78.7	75.1	80.5	58.0
Highlandtown	76.1	64.1	80.0	78.4	75.5	68.6	68.8	75.2	77.1	78.8	62.6
Howard Park/West Arlington	77.0	78.7	78.2	85.9	72.4	78.8	77.2	76.8	71.4	74.8	48.6
Inner Harbor/Federal Hill	84.2	85.3	93.5	91.7	90.3	84.0	87.0	81.6	84.4	91.7	74.4
Jonestown/Oldtown	64.1	64.2	63.0	59.8	68.7	75.8	66.1	71.3	69.1	78.0	NA
Lauraville	81.4	75.0	82.0	83.2	81.3	72.3	81.5	80.2	76.2	79.6	66.1
Loch Raven	78.4	79.7	82.5	78.9	81.1	72.5	78.1	74.0	75.8	81.0	54.4
Madison/East End	56.1	52.0	58.4	65.9	65.9	79.8	72.4	64.8	63.4	72.6	50.3
Medfield/Hampden/Woodberry	86.2	84.7	78.4	83.0	88.0	73.0	80.8	77.8	80.7	84.0	66.5
Midtown*	72.3	81.3	72.2	81.0	73.6	61.7	79.2	84.6	80.9	83.8	67.9
Midway/Coldstream	60.7	61.8	72.0	67.0	64.9	82.3	75.1	61.7	65.6	69.3	45.2
Morrell Park/Violetville	76.5	75.0	86.0	78.0	75.3	92.9	84.2	82.4	76.7	81.9	61.7
Mt. Washington/Coldspring	90.9	92.3	94.7	97.2	91.9	84.5	87.8	86.2	88.4	89.2	64.2
North Baltimore/Guilford/Homeland	94.2	90.2	93.5	96.2	95.3	74.0	87.8	83.3	83.1	87.1	63.6
Northwood	77.9	83.0	81.7	77.6	77.4	66.0	82.0	77.1	73.9	76.5	58.3
Oldtown/Middle East	NA	NA	NA	NA	NA	NA	NA	NA	NA	NA	53.8
Orangeville/East Highlandtown	75.4	69.8	76.7	72.3	64.9	58.7	59.2	73.0	68.7	74.9	40.4
Patterson Park North & East	63.5	63.2	72.0	61.7	67.2	72.4	65.3	71.4	76.4	73.4	50.8
Penn North/Reservoir Hill	69.2	69.9	71.7	70.4	68.9	72.2	73.5	73.1	70.4	72.7	54.3
Perkins/Middle East	56.4	67.2	66.4	64.3	71.8	73.6	73.9	72.8	65.3	70.0	NA
Pimlico/Arlington/Hilltop	66.5	66.7	70.9	75.1	66.4	77.9	74.5	71.2	69.4	72.2	51.0
Poppleton/The Terraces/Hollins Market	77.3	65.3	77.3	72.7	68.8	65.9	83.3	70.6	66.7	81.9	53.4
Sandtown-Winchester/Harlem Park	66.5	62.2	72.9	69.0	68.0	83.1	70.9	69.5	68.2	70.5	58.3
South Baltimore	77.0	85.1	86.1	90.5	90.9	75.4	93.8	84.3	88.5	91.5	71.8
Southeastern	69.1	68.6	76.4	70.0	74.6	66.5	81.2	64.0	71.1	74.3	50.9
Southern Park Heights	68.9	71.9	73.7	75.4	69.1	70.7	71.1	70.7	66.5	71.1	52.4
Southwest Baltimore	69.9	63.6	71.5	70.6	61.6	75.2	73.4	71.2	69.1	71.6	50.0
The Waverlies	65.4	67.0	72.1	73.9	75.7	73.2	74.8	68.5	71.5	67.9	55.6
Upton/Druid Heights*	66.5	66.4	73.7	66.4	67.5	83.8	76.6	68.2	68.9	71.4	60.8
Washington Village	74.3	77.6	82.8	72.0	69.2	69.5	78.1	75.4	78.7	84.4	65.7
Westport/Mt. Winans/Lakeland	73.2	64.4	75.4	72.7	72.9	74.4	68.5	68.1	70.9	81.3	47.1
Baltimore City	72.1	72.1	76.5	74.9	74.3	86.8	76.3	74.3	73.7	77.4	57.0

Note: Change in data collection methodology for 2010; not comparable to previous years.

NA = Data not available due to major modifications in Census geographies from 2000 to 2010.

* 2010 data using new 2010 CSA boundaries. CSA boundaries were modified slightly due to modifications in Census geographies from 2000 to 2010.

For more information, visit <http://www.bnajfi.org>.

Percent of Births Delivered at Term

The percentage of babies born at full term (37-42 weeks gestation) that year.

Source: Maryland Department of Health and Mental Hygiene (DHMH)

Community Statistical Area (CSA)	2000	2001	2002	2003	2004	2005	2006	2007	2008	2009	2010*	09-10 Change	00-10 Change
Allendale/Irvington/S. Hilton	85.6	91.4	83.8	82.1	86.3	84.4	82.2	87.5	87.0	81.5	85.3	3.8	-0.3
Beechfield/Ten Hills/West Hills	80.2	93.7	90.2	83.2	75.4	84.8	82.5	83.6	88.2	88.4	87.5	-0.9	7.3
Belair-Edison	82.9	86.8	82.8	82.6	86.1	81.6	83.7	80.4	78.7	86.0	84.0	-1.9	1.1
Brooklyn/Curtis Bay/Hawkins Point	87.8	87.9	87.1	85.2	87.1	89.4	88.5	86.2	88.3	87.6	83.1	-4.4	-4.7
Canton	94.5	84.9	83.3	90.5	79.5	93.5	94.6	92.0	87.8	89.2	94.6	5.4	0.0
Cedonia/Frankford	84.7	88.1	86.7	88.0	83.2	83.3	87.3	84.5	85.6	85.3	83.8	-1.5	-0.9
Cherry Hill	76.7	81.4	86.3	78.1	82.7	80.4	80.2	90.4	84.1	83.8	80.9	-2.9	4.2
Chinquapin Park/Belvedere	87.7	90.9	86.6	90.6	79.0	86.8	91.3	84.8	88.5	89.2	87.0	-2.2	-0.7
Claremont/Armistead	83.4	87.2	86.5	83.2	90.4	87.0	83.6	91.2	86.7	86.7	83.0	-3.6	-0.4
Clifton-Berea	79.6	83.2	81.0	80.4	84.5	84.8	82.9	80.9	80.9	84.0	82.8	-1.1	3.2
Cross-Country/Cheswolde	93.8	93.6	94.4	90.1	92.1	92.1	94.9	94.3	92.2	95.8	93.2	-2.6	-0.6
Dickeyville/Franklintown	85.7	82.5	80.8	91.9	80.6	86.7	78.6	84.1	80.7	91.5	85.5	-6.1	-0.3
Dorchester/Ashburton	85.7	80.6	81.1	80.9	89.7	86.7	85.1	84.3	83.4	83.0	87.2	4.2	1.5
Downtown/Seton Hill	87.8	82.5	89.1	87.9	85.1	88.0	86.8	92.0	85.1	91.8	87.5	-4.3	-0.3
Edmondson Village	79.2	85.6	81.2	83.5	83.5	77.4	79.8	83.2	87.1	81.3	85.0	3.8	5.8
Fells Point	88.2	90.4	91.5	89.3	88.8	87.4	89.9	87.2	89.2	88.5	94.2	5.7	6.0
Forest Park/Walbrook	80.1	84.5	81.6	83.8	87.1	84.6	80.5	89.3	81.9	89.2	85.9	-3.3	5.8
Glen-Falstaff	90.0	91.1	90.2	89.6	92.0	88.4	91.6	91.8	91.6	90.6	90.4	-0.2	0.4
Greater Charles Village/Barclay	87.8	88.6	86.3	83.9	88.2	90.3	86.5	87.2	91.9	85.6	86.1	0.5	-1.7
Greater Govans	83.9	78.3	85.7	89.2	84.8	88.7	85.4	85.3	86.4	80.5	87.2	6.8	3.4
Greater Mondawmin	81.4	87.2	85.7	84.3	84.9	87.6	86.2	79.8	90.3	82.0	78.4	-3.5	-3.0
Greater Roland Park/Poplar Hill	89.6	95.1	94.9	98.4	88.5	92.2	95.4	88.9	96.9	88.7	94.3	5.6	4.7
Greater Rosemont	82.5	80.1	82.1	82.6	83.0	87.8	84.3	85.3	88.8	86.3	87.1	0.8	4.6
Greenmount East	85.9	85.2	80.7	83.2	83.4	85.9	76.3	80.8	80.4	82.3	85.4	3.1	-0.5
Hamilton	91.8	82.5	87.9	91.0	88.8	88.1	91.4	87.4	86.0	79.9	83.1	3.2	-8.8
Harbor East/Little Italy	NA	NA	NA	NA	NA	NA	NA	NA	NA	NA	84.0	NA	NA
Harford/Echodale	85.0	92.1	88.5	87.3	86.1	88.0	86.6	88.4	87.0	86.3	85.8	-0.5	0.8
Highlandtown	92.4	83.3	85.6	93.2	85.3	92.2	85.9	90.7	86.3	89.8	92.4	2.6	0.0
Howard Park/West Arlington	77.8	82.0	82.7	80.8	79.7	82.2	86.6	88.0	84.9	85.0	85.0	0.0	7.3
Inner Harbor/Federal Hill	87.0	83.3	89.1	85.0	88.6	94.9	88.4	85.7	93.6	92.9	92.7	-0.2	5.7
Jonestown/Oldtown	76.9	79.9	82.4	80.5	82.8	85.0	84.5	89.5	84.5	88.1	NA	NA	NA
Lauraville	85.7	83.3	88.5	91.2	90.3	89.4	89.7	83.1	86.0	88.8	85.8	-3.0	0.1
Loch Raven	84.9	84.5	87.5	87.4	85.7	85.5	81.4	88.2	81.2	88.4	83.9	-4.4	-0.9
Madison/East End	80.8	82.1	82.0	83.0	81.3	80.9	83.2	83.4	84.7	83.6	83.6	0.0	2.8
Medfield/Hampden/Woodberry	85.6	92.1	90.1	92.0	86.2	92.0	87.7	90.2	89.5	86.9	90.0	3.1	4.4
Midtown*	90.4	76.9	83.5	88.8	86.8	83.0	83.3	86.3	90.9	90.9	89.3	-1.6	-1.1
Midway/Coldstream	83.2	80.0	79.6	82.1	84.5	81.2	81.5	85.2	81.5	84.7	85.7	1.1	2.5
Morrell Park/Violetville	87.8	83.6	87.0	82.7	84.2	90.8	87.5	86.0	91.1	91.4	87.5	-3.9	-0.3
Mt. Washington/Coldspring	94.3	89.7	96.0	90.3	91.9	90.0	89.2	89.7	97.1	90.5	89.6	-1.0	-4.8
North Baltimore/Guilford/Homeland	91.6	90.9	91.5	89.3	88.8	87.2	88.9	92.5	92.2	92.9	91.5	-1.3	-0.1
Northwood	83.7	81.0	85.6	84.5	89.9	84.0	83.5	86.7	84.9	87.3	85.9	-1.5	2.2
Oldtown/Middle East	NA	NA	NA	NA	NA	NA	NA	NA	NA	NA	87.8	NA	NA
Orangeville/East Highlandtown	85.2	92.3	88.7	88.1	92.5	91.0	82.7	88.6	89.4	84.5	87.6	3.1	2.4
Patterson Park North & East	80.1	84.1	83.7	85.8	87.9	85.1	85.0	89.0	86.9	88.4	89.6	1.2	9.4
Penn North/Reservoir Hill	77.5	86.2	79.5	84.9	79.4	88.8	83.1	85.0	84.6	86.7	79.3	-7.4	1.8
Perkins/Middle East	83.6	82.4	85.0	81.4	86.4	79.6	84.1	78.3	83.7	88.6	NA	NA	NA
Pimlico/Arlington/Hilltop	83.3	80.8	83.5	83.7	86.1	79.3	82.0	77.9	79.0	86.7	83.4	-3.2	0.2
Poppleton/The Terraces/Hollins Market	83.0	81.6	84.1	85.9	83.9	82.6	86.5	76.5	82.8	84.3	89.0	4.7	6.1
Sandtown-Winchester/Harlem Park	80.8	80.4	84.1	83.2	83.6	86.1	80.2	86.0	85.0	85.8	80.4	-5.4	-0.4
South Baltimore	85.1	86.5	89.9	84.5	83.3	85.5	88.8	89.9	92.0	91.5	97.1	5.6	12.0
Southeastern	83.6	86.0	84.0	92.7	90.7	83.1	84.6	84.7	84.3	91.2	83.0	-8.1	-0.5
Southern Park Heights	84.1	80.6	81.9	82.8	82.6	78.4	84.2	85.0	84.3	82.5	85.4	2.9	1.3
Southwest Baltimore	85.3	84.1	85.1	83.1	85.6	82.4	83.7	84.1	84.2	85.9	85.8	-0.2	0.5
The Waverlies	86.6	82.1	88.3	85.4	92.2	86.1	82.0	79.8	81.5	86.2	82.1	-4.2	-4.6
Upton/Druid Heights*	79.0	76.7	83.4	82.1	84.0	81.8	81.8	77.6	84.5	82.3	88.3	6.0	9.3
Washington Village	86.7	85.1	85.1	85.0	84.0	82.4	91.8	87.0	85.1	84.4	84.8	0.4	-1.9
Westport/Mt. Winans/Lakeland	90.2	85.2	87.7	85.2	84.5	90.1	87.7	88.3	87.9	88.1	86.8	-1.3	-3.4
Baltimore City	84.4	85.2	85.6	85.4	85.7	85.7	85.3	86.0	86.3	86.7	86.5	-0.2	2.1

NA = Data not available due to major modifications in Census geographies from 2000 to 2010.

* 2010 data using new 2010 CSA boundaries. CSA boundaries were modified slightly due to modifications in Census geographies from 2000 to 2010.

For more information, visit <http://www.bniajfi.org>.

Percent of Babies Born with a Satisfactory Birth Weight

The percentage of babies born with a birth weight of 5.5 pounds or greater that year.

Source: Maryland Department of Health and Mental Hygiene (DHMH)

Community Statistical Area (CSA)	2000	2001	2002	2003	2004	2005	2006	2007	2008	2009	2010*	09-10 Change	00-10 Change
Allendale/Irvington/S. Hilton	87.3	89.3	85.3	89.2	85.5	88.0	84.1	87.1	85.5	83.6	87.4	3.9	0.1
Beechfield/Ten Hills/West Hills	86.2	92.0	90.7	88.6	79.9	82.2	82.5	85.7	88.7	88.4	91.7	3.3	5.4
Belair-Edison	84.8	86.8	84.1	83.0	86.1	84.2	84.7	83.2	79.8	84.9	87.7	2.8	2.9
Brooklyn/Curtis Bay/Hawkins Point	86.7	85.2	91.5	85.2	85.4	88.6	87.5	85.9	86.6	86.2	89.9	3.7	3.1
Canton	94.5	90.4	86.4	92.6	84.9	95.7	97.8	95.0	89.8	89.2	94.6	5.4	0.0
Cedonia/Frankford	85.8	90.2	89.2	88.3	83.7	85.0	87.6	88.2	87.2	84.3	84.4	0.1	-1.5
Cherry Hill	80.8	82.0	84.7	80.8	82.7	81.6	83.0	92.8	82.9	82.6	88.8	6.2	8.0
Chinquapin Park/Belvedere	86.9	93.6	87.5	91.3	86.5	87.7	86.5	83.3	86.3	89.2	92.6	3.4	5.7
Claremont/Armistead	89.4	93.6	87.6	87.4	87.2	90.4	89.7	92.6	87.4	89.6	83.0	-6.6	-6.4
Clifton-Berea	82.0	87.9	84.8	84.4	85.2	83.2	85.1	86.4	83.4	85.6	83.6	-2.1	1.5
Cross-Country/Cheswolde	92.8	94.9	91.7	91.4	91.7	93.7	94.9	94.3	92.2	96.2	95.1	-1.1	2.3
Dickeyville/Franklinton	81.0	85.7	89.0	90.3	74.6	88.3	82.1	87.3	87.7	89.8	85.5	-4.4	4.5
Dorchester/Ashburton	86.0	79.8	84.6	83.2	89.0	90.8	84.5	81.0	86.6	82.3	85.7	3.4	-0.3
Downtown/Seton Hill	86.5	82.5	90.9	92.4	89.6	86.0	88.2	90.0	91.9	91.8	80.4	-11.4	-6.1
Edmondson Village	82.3	84.8	80.3	84.4	82.6	77.4	80.6	85.6	86.3	84.8	85.0	0.2	2.7
Fells Point	90.9	92.0	93.2	92.0	92.8	91.6	94.6	92.0	92.1	89.9	94.2	4.2	3.2
Forest Park/Walbrook	82.5	88.4	80.9	84.6	85.6	82.4	80.5	89.3	83.6	88.3	87.3	-1.0	4.8
Glen-Falstaff	90.0	91.7	91.3	90.2	89.5	87.9	90.3	90.0	91.6	92.6	94.5	1.9	4.5
Greater Charles Village/Barclay	85.3	88.6	86.3	91.6	88.9	87.1	90.1	85.0	91.2	85.6	88.3	2.7	3.1
Greater Govans	84.5	84.2	87.3	88.3	84.8	85.3	88.5	84.7	88.3	81.7	87.9	6.3	3.4
Greater Mondawmin	84.3	88.1	87.5	84.3	84.9	91.4	85.4	88.2	89.4	82.0	85.6	3.7	1.3
Greater Roland Park/Poplar Hill	95.5	96.7	88.6	96.8	89.7	98.0	95.4	93.7	100.0	94.3	94.3	-0.1	-1.2
Greater Rosemont	84.5	79.5	79.8	83.2	86.0	86.6	83.5	85.8	86.6	83.5	87.8	4.3	3.3
Greenmount East	86.9	87.5	83.9	80.8	80.8	87.1	75.8	79.7	81.1	84.1	82.6	-1.5	-4.3
Hamilton	95.2	84.1	88.5	86.8	91.9	91.3	92.5	87.4	89.3	83.3	86.4	3.1	-8.8
Harbor East/Little Italy	NA	NA	NA	NA	NA	NA	NA	NA	NA	NA	85.1	NA	NA
Harford/Echodale	86.7	91.3	85.2	90.3	85.7	89.7	87.2	90.0	88.1	88.0	88.1	0.0	1.4
Highlandtown	95.7	85.9	86.7	97.3	88.2	94.1	89.8	93.8	89.3	89.1	91.6	2.6	-4.0
Howard Park/West Arlington	81.7	80.9	88.2	83.8	82.9	75.3	91.3	88.7	84.0	90.7	86.0	-4.7	4.2
Inner Harbor/Federal Hill	91.1	85.3	92.0	88.3	89.7	95.5	93.2	88.4	93.1	93.5	92.1	-1.4	1.0
Jonestown/Oldtown	82.1	81.1	84.2	78.6	87.7	87.1	87.4	88.9	86.6	88.7	NA	NA	NA
Lauraville	88.6	89.6	88.5	92.0	91.8	87.3	86.3	85.3	88.4	89.5	86.6	-2.9	-2.0
Loch Raven	87.2	81.3	86.5	87.4	86.2	88.4	85.1	89.8	80.7	86.8	88.6	1.8	1.4
Madison/East End	87.4	80.9	85.1	84.7	81.8	79.2	86.5	80.8	88.6	83.1	85.4	2.3	-2.0
Medfield/Hampden/Woodberry	88.7	90.0	91.0	89.9	88.0	93.9	89.7	92.9	91.7	86.9	91.0	4.1	2.3
Midtown*	91.5	84.6	84.5	88.8	84.6	85.0	86.5	84.6	92.7	88.9	90.2	1.3	-1.3
Midway/Coldstream	84.3	85.5	83.4	78.2	83.3	82.5	82.7	86.3	79.5	88.1	79.4	-8.7	-4.9
Morrell Park/Violetville	88.7	87.9	91.0	81.1	87.1	91.5	88.3	89.0	87.7	89.5	92.5	3.0	3.8
Mt. Washington/Coldspring	94.3	93.6	96.0	90.3	87.8	88.6	86.5	93.1	94.2	90.5	92.5	2.0	-1.8
North Baltimore/Guilford/Homeland	96.8	92.1	92.8	88.7	93.5	88.5	91.0	92.5	93.5	92.1	90.7	-1.5	-6.1
Northwood	87.2	85.7	87.6	83.9	89.9	82.8	84.0	86.2	85.4	87.3	84.0	-3.3	-3.2
Oldtown/Middle East	NA	NA	NA	NA	NA	NA	NA	NA	NA	NA	87.2	NA	NA
Orangeville/East Highlandtown	91.0	93.8	88.7	88.7	94.8	93.1	88.3	88.6	93.4	93.6	91.0	-2.6	0.0
Patterson Park North & East	81.2	81.6	85.2	85.4	88.2	88.5	88.1	90.7	91.5	89.0	91.9	2.8	10.6
Penn North/Reservoir Hill	78.1	79.7	81.3	82.9	79.4	86.6	84.3	87.5	84.6	84.8	84.3	-0.6	6.2
Perkins/Middle East	85.7	87.0	82.9	81.4	83.5	85.2	85.2	82.6	86.7	90.0	NA	NA	NA
Pimlico/Arlington/Hilltop	83.6	85.9	83.1	82.9	85.6	82.1	85.0	81.4	84.4	85.6	84.7	-0.8	1.1
Poppleton/The Terraces/Hollins Market	79.5	80.6	81.8	89.9	81.3	83.7	89.6	84.3	80.6	84.3	84.9	0.6	5.4
Sandtown-Winchester/Harlem Park	81.8	80.7	84.4	83.6	82.9	82.4	82.6	84.2	84.6	86.2	86.8	0.6	5.0
South Baltimore	87.4	89.2	93.7	88.1	84.9	91.6	92.5	94.4	95.4	94.9	95.1	0.3	7.8
Southeastern	87.5	88.4	87.7	88.2	89.8	89.8	85.5	86.5	85.1	91.2	83.0	-8.1	-4.5
Southern Park Heights	85.1	83.5	81.9	86.5	81.8	82.7	86.8	82.3	84.7	82.0	87.7	5.7	2.6
Southwest Baltimore	86.0	84.3	85.1	83.4	85.6	81.8	84.2	86.0	85.7	86.2	87.0	0.8	1.0
The Waverlies	88.2	86.8	89.0	87.7	93.9	90.7	82.7	82.3	83.1	86.2	83.8	-2.5	-4.4
Upton/Druid Heights*	82.7	84.0	84.6	83.4	85.9	86.8	83.2	82.5	85.8	85.9	88.3	2.4	5.6
Washington Village	85.8	89.7	90.8	86.0	89.4	85.1	93.2	92.8	83.0	85.6	92.9	7.4	7.1
Westport/Mt. Winans/Lakeland	88.2	85.2	86.2	83.6	88.4	88.7	87.7	85.3	89.1	87.3	92.6	5.2	4.3
Baltimore City	86.2	86.5	86.5	86.3	86.3	86.8	86.7	87.2	87.2	87.2	88.3	1.1	2.1

NA = Data not available due to major modifications in Census geographies from 2000 to 2010.

* 2010 data using new 2010 CSA boundaries. CSA boundaries were modified slightly due to modifications in Census geographies from 2000 to 2010.

For more information, visit <http://www.bnajfi.org>.

Teen Birth Rate

The number of teen ages 15-19 who gave birth per 1,000 teens (as reported by 2000 and 2010 Census).

Source: Maryland Department of Health and Mental Hygiene (DHMH)

Community Statistical Area (CSA)	2000	2001	2002	2003	2004	2005	2006	2007	2008	2009	2010*	09-10 Change	00-10 Change
Allendale/Irvington/S. Hilton	100.0	84.5	74.6	62.0	59.2	60.6	65.1	81.0	89.7	88.3	55.0	-33.2	-45.0
Beechfield/Ten Hills/West Hills	69.4	53.9	52.0	32.8	61.7	40.5	52.7	73.8	80.2	50.6	42.8	-7.9	-26.6
Belair-Edison	77.1	79.7	78.4	85.0	91.5	96.7	102.7	70.7	68.0	65.3	67.6	2.2	-9.6
Brooklyn/Curtis Bay/Hawkins Point	221.5	183.4	128.0	100.3	162.6	131.5	123.9	100.0	117.4	82.6	111.1	28.5	-110.3
Canton	9.3	64.8	46.3	46.3	27.8	18.5	8.5	17.1	25.6	25.6	46.5	20.9	37.3
Cedonia/Frankford	81.6	77.7	90.7	72.5	66.1	89.4	85.8	94.2	70.3	69.1	48.9	-20.2	-32.7
Cherry Hill	164.4	143.8	167.8	126.7	150.7	123.3	97.9	133.5	62.3	109.8	57.6	-52.2	-106.7
Chinquapin Park/Belvedere	73.1	73.1	59.4	73.1	91.3	82.2	60.6	47.1	67.3	43.8	50.6	6.9	-22.4
Claremont/Armistead	78.3	86.2	39.2	49.6	52.2	33.9	58.8	71.2	65.0	49.5	48.9	-0.7	-29.5
Clifton-Berea	132.3	106.3	95.4	93.3	86.8	97.6	120.3	99.6	103.7	83.0	72.0	-11.0	-60.3
Cross-Country/Cheswolde	12.1	21.2	21.2	3.0	18.2	24.2	6.6	29.9	19.9	16.6	0.0	-16.6	-12.1
Dickeyville/Franklintown	76.9	112.4	100.6	76.9	35.5	53.3	57.7	38.5	57.7	51.3	21.1	-30.2	-55.8
Dorchester/Ashburton	94.4	66.7	88.9	77.8	88.9	58.3	86.8	84.4	99.3	54.6	49.3	-5.3	-45.1
Downtown/Seton Hill	180.0	0.0	0.0	0.0	120.0	80.0	66.7	100.0	100.0	116.7	65.2	-51.4	-114.8
Edmondson Village	100.8	78.4	84.0	95.2	92.4	78.4	79.7	57.7	57.7	63.2	89.5	26.3	-11.3
Fells Point	132.8	203.1	117.2	164.1	156.3	125.0	108.1	101.4	114.9	81.1	88.9	7.8	-43.9
Forest Park/Walbrook	98.4	101.0	106.2	46.6	85.5	77.7	67.3	77.3	37.4	57.4	71.8	14.5	-26.6
Glen-Falstaff	49.1	34.0	35.8	22.6	39.6	39.6	48.0	32.0	62.0	38.0	49.5	11.5	0.5
Greater Charles Village/Barclay	29.2	28.2	22.6	20.7	16.0	18.8	15.0	19.1	19.1	14.0	9.7	-4.4	-19.5
Greater Govans	90.9	97.4	51.9	77.9	80.1	67.1	105.5	78.1	57.0	59.1	53.7	-5.4	-37.3
Greater Mondawmin	84.5	63.9	63.9	47.9	63.9	54.8	55.0	96.3	50.5	84.9	42.9	-41.9	-41.5
Greater Roland Park/Poplar Hill	8.5	0.0	0.0	0.0	17.1	0.0	0.0	0.0	0.0	0.0	0.0	0.0	-8.5
Greater Rosemont	123.4	136.4	88.3	105.2	97.4	92.2	109.1	119.3	101.1	110.2	80.8	-29.4	-42.5
Greenmount East	164.3	150.0	147.6	102.4	90.5	111.9	97.5	83.0	76.8	83.0	99.2	16.2	-65.1
Hamilton	29.5	55.4	59.0	70.1	81.2	62.7	55.1	63.0	65.6	68.2	25.3	-43.0	-4.3
Harbor East/Little Italy	NA	NA	NA	NA	NA	NA	NA	NA	NA	NA	70.4	NA	NA
Harford/Echodale	58.8	53.7	66.5	58.8	66.5	66.5	69.6	43.5	58.7	47.8	15.8	-32.0	-43.0
Highlandtown	50.2	91.3	41.1	36.5	45.7	45.7	98.9	120.9	60.4	44.0	77.6	33.6	27.4
Howard Park/West Arlington	59.3	49.0	69.6	43.8	56.7	64.4	58.1	64.2	64.2	52.0	61.6	9.6	2.3
Inner Harbor/Federal Hill	57.0	70.2	70.2	52.6	43.9	21.9	48.1	32.1	42.8	32.1	30.0	-2.1	-27.0
Jonestown/Oldtown	145.6	135.9	184.5	131.1	174.8	135.9	101.3	91.5	94.8	98.0	NA	NA	NA
Lauraville	38.5	47.6	38.5	45.4	52.2	36.3	45.8	59.5	45.8	41.2	38.8	-2.4	0.3
Loch Raven	58.4	54.6	62.1	56.5	47.1	64.0	61.8	65.5	49.1	50.9	57.8	6.9	-0.5
Madison/East End	158.8	130.3	106.6	128.0	128.0	128.0	107.0	120.9	123.3	111.6	81.0	-30.6	-77.8
Medfield/Hampden/Woodberry	82.7	77.7	92.7	82.7	45.1	67.7	62.5	73.4	51.6	54.3	58.8	4.5	-23.9
Midtown*	33.1	27.6	23.9	20.2	18.4	7.4	17.5	17.5	10.5	7.0	8.0	1.0	-25.1
Midway/Coldstream	95.7	106.9	75.0	75.0	93.8	80.7	78.3	80.2	92.0	80.2	53.7	-26.5	-41.9
Morrell Park/Violetville	115.2	78.5	78.5	104.7	36.6	73.3	63.0	71.4	88.2	54.6	78.8	24.2	-36.4
Mt. Washington/Coldspring	8.4	0.0	16.8	8.4	8.4	0.0	0.0	0.0	0.0	10.9	10.9	0.0	2.5
North Baltimore/Guilford/Homeland	1.5	1.5	1.5	1.5	1.5	1.5	1.6	5.5	2.4	0.8	3.1	2.3	1.6
Northwood	30.0	22.8	15.0	20.0	15.7	22.8	16.6	27.2	26.4	21.9	15.6	-6.3	-14.3
Oldtown/Middle East	NA	NA	NA	NA	NA	NA	NA	NA	NA	NA	74.2	NA	NA
Orangeville/East Highlandtown	97.4	101.1	104.9	116.1	123.6	101.1	121.2	113.6	94.7	98.5	106.1	7.6	8.7
Patterson Park North & East	119.9	121.5	108.4	88.7	110.0	111.7	94.4	65.0	60.4	57.3	87.1	29.8	-32.8
Penn North/Reservoir Hill	108.5	67.0	103.9	97.0	50.8	64.7	101.9	83.3	88.0	83.3	47.1	-36.3	-61.5
Perkins/Middle East	102.4	105.4	96.4	75.3	60.2	96.4	53.4	78.3	89.0	53.4	NA	NA	NA
Pimlico/Arlington/Hilltop	132.4	149.2	117.6	100.8	92.4	75.6	92.5	84.9	67.9	92.5	63.7	-28.7	-68.6
Poppleton/The Terraces/Hollins Market	144.4	133.3	144.4	94.4	122.2	88.9	77.6	50.2	73.1	86.8	65.5	-21.3	-79.0
Sandtown-Winchester/Harlem Park	109.3	96.7	111.6	85.2	79.4	93.2	75.4	101.4	101.4	88.4	69.8	-18.6	-39.5
South Baltimore	52.4	68.1	26.2	47.1	26.2	26.2	16.3	27.2	10.9	16.3	0.0	-16.3	-52.4
Southeastern	139.1	104.3	113.0	95.7	100.0	100.0	79.8	121.8	67.2	58.8	68.0	9.1	-71.2
Southern Park Heights	138.1	115.7	143.7	110.1	93.3	104.5	104.5	70.7	91.6	77.2	78.2	1.0	-59.8
Southwest Baltimore	126.1	137.5	133.0	117.0	96.6	101.1	94.8	98.1	112.6	98.1	82.4	-15.8	-43.8
The Waverlies	113.0	66.4	99.7	69.8	73.1	73.1	111.5	76.4	79.6	54.1	53.6	-0.6	-59.4
Upton/Druid Heights*	165.4	153.1	155.6	121.0	111.1	153.1	75.1	121.1	96.9	84.7	97.4	12.6	-68.1
Washington Village	57.1	137.1	205.7	125.7	125.7	97.1	68.3	48.8	87.8	58.5	69.8	11.2	12.6
Westport/Mt. Winans/Lakeland	104.0	110.7	100.7	127.5	107.4	107.4	90.6	84.4	109.4	59.4	64.9	5.5	-39.1
Baltimore City	83.3	81.1	77.1	68.2	68.0	67.9	68.6	69.2	66.1	60.1	51.1	-9.0	-32.2

NA = Data not available due to major modifications in Census geographies from 2000 to 2010.

* 2010 data using new 2010 CSA boundaries. CSA boundaries were modified slightly due to modifications in Census geographies from 2000 to 2010.

For more information, visit <http://www.bniajfi.org>.

Number of Children Hospitalized for Asthma or Asthma-Related Illnesses

Number of children in each zip code admitted to emergency rooms for severe asthma or asthma related illnesses.

Source: Health Services Cost Review Commission (HSCRC)

Zip Code	2000	2001	2002	2003	2004	2005	2006	2007	2008	2009	2010	09-10 Change	00-10 Change
21201	35	25	38	18	24	31	15	20	12	6	18	200.0	-48.6
21202	36	34	28	30	27	43	25	17	32	24	22	-8.3	-38.9
21205	45	54	55	58	73	66	37	39	49	60	53	-11.7	17.8
21206	55	60	48	62	54	73	70	80	67	81	55	-32.1	0.0
21207	14	13	14	6	11	17	47	58	55	43	4	-90.7	-71.4
21208	ND	1	0	0	2	ND	14	6	3	10	0	-100.0	ND
21209	9	7	7	17	11	8	6	8	9	3	8	166.7	-11.1
21210	0	1	3	2	4	ND	2	3	0	ND	4	-	-
21211	16	10	7	14	9	13	6	10	3	7	1	-85.7	-93.8
21212	22	29	30	37	36	26	13	20	24	24	12	-50.0	-45.5
21213	79	107	87	114	101	121	68	65	61	70	68	-2.9	-13.9
21214	12	24	24	34	37	49	19	21	12	20	17	-15.0	41.7
21215	108	113	149	130	121	109	85	95	71	70	79	12.9	-26.9
21216	66	87	74	85	93	86	45	48	48	53	47	-11.3	-28.8
21217	106	98	87	76	63	88	60	55	28	53	56	5.7	-47.2
21218	84	87	91	117	96	113	63	58	45	53	60	13.2	-28.6
21222	ND	1	3	3	3	6	55	64	66	51	0	-100.0	ND
21223	59	67	79	77	67	80	47	63	46	40	50	25.0	-15.3
21224	47	60	54	75	83	77	47	50	38	53	42	-20.8	-10.6
21225	41	60	40	69	75	88	67	82	64	73	20	-72.6	-51.2
21226	ND	6	5	12	8	7	11	10	7	7	0	-100.0	ND
21227	6	4	5	6	15	17	29	32	28	35	9	-74.3	50.0
21228	ND	4	1	6	4	7	16	22	13	14	1	-92.9	ND
21229	86	88	64	66	75	95	54	85	61	71	55	-22.5	-36.0
21230	47	50	54	51	48	61	33	23	21	29	22	-24.1	-53.2
21231	14	18	31	33	13	16	11	19	7	18	16	-11.1	14.3
21234	6	10	4	10	5	ND	37	46	48	52	1	-98.1	-83.3
21236	0	0	4	1	0	0	19	20	20	21	2	-90.5	-
21239	32	43	33	38	40	45	23	27	22	29	23	-20.7	-28.1
21251	0	0	0	0	0	0	0	0	0	ND	0	-	-
21287	0	0	0	0	0	0	0	0	1	1	0	-100.0	-
Baltimore City	1,034	1,161	1,119	1,247	1,198	1,354	1,024	1,146	961	1,071	751	-29.9	-27.4

ND = No data

For more information, visit <http://www.bnajfi.org>.

Percent of People with Vaccine-Preventable Diseases

The percentage of people with vaccine-preventable diseases per 10,000 (as reported by 2000 and 2010 Census). Vaccine preventable diseases include measles, mumps, flu, meningitis, and others.

Source: Baltimore City Health Department

Zip Code	2000	2001	2002	2003	2004	2005	2006	2007	2008	2009	2010	09-10 Change	00-10 Change
21201	17.7	28.7	6.1	8.6	31.8	39.7	6.0	1.3	7.3	0.7	9.4	8.7	-8.3
21202	16.5	39.7	15.3	13.2	50.9	51.8	3.0	4.7	5.9	0.0	9.6	9.6	-6.9
21205	15.9	22.6	14.0	14.5	25.5	27.7	9.2	3.3	9.8	2.2	6.2	4.0	-9.7
21206	7.4	11.9	3.4	5.3	11.9	13.7	2.8	4.0	4.8	1.0	3.0	2.0	-4.4
21207	7.2	12.6	3.6	8.4	8.1	11.5	2.1	1.7	2.9	0.4	0.8	0.4	-6.4
21208	5.2	2.6	2.6	0.0	12.5	6.3	1.6	3.2	1.6	0.0	0.0	0.0	-5.2
21209	2.7	0.0	0.9	3.5	6.2	7.1	1.3	0.8	0.4	0.0	1.5	1.5	-1.2
21210	1.8	5.5	1.8	2.8	2.8	3.7	1.7	3.4	2.6	0.0	4.9	4.9	3.1
21211	8.6	17.1	5.1	4.6	18.6	12.6	1.8	1.2	2.4	1.2	5.2	4.0	-3.4
21212	9.1	8.7	3.7	2.1	8.2	9.0	2.3	3.4	3.4	0.0	3.1	3.1	-6.0
21213	15.1	20.2	5.1	8.9	24.5	25.5	5.5	6.0	8.6	1.6	3.7	2.1	-11.4
21214	11.2	7.2	4.9	3.1	14.1	9.9	2.8	2.3	3.8	1.9	5.3	3.4	-5.9
21215	8.2	14.4	4.9	5.5	17.4	17.4	3.3	2.0	3.3	1.1	4.5	3.4	-3.7
21216	8.6	15.6	8.9	7.2	15.2	18.5	2.4	1.4	4.7	0.8	5.9	5.1	-2.7
21217	15.7	27.1	10.5	10.5	31.7	27.6	6.0	4.3	4.6	2.6	5.9	3.3	-9.8
21218	9.9	18.3	4.8	8.8	20.2	22.0	4.5	3.5	4.9	0.9	4.0	3.1	-5.9
21222	20.6	0.0	6.9	0.0	15.1	7.5	3.5	4.0	6.9	0.0	0.0	0.0	-20.6
21223	14.8	24.0	15.1	13.4	24.5	26.1	3.2	2.6	6.8	1.3	4.6	3.3	-10.2
21224	13.0	20.4	7.4	6.1	22.9	16.5	3.0	3.5	7.4	1.0	1.6	0.6	-11.4
21225	13.0	14.0	5.0	8.0	15.1	13.4	2.7	2.2	7.0	1.6	1.5	-0.1	-11.5
21226	12.1	24.2	6.1	18.2	12.8	22.4	1.2	3.0	1.5	1.5	1.3	-0.2	-10.8
21227	0.0	0.0	0.0	0.0	0.0	0.0	2.6	2.4	3.6	0.0	0.6	0.6	0.6
21228	0.0	0.0	0.0	0.0	0.0	0.0	1.2	1.0	1.9	0.0	0.0	0.0	0.0
21229	11.7	15.7	4.4	4.4	11.4	12.6	2.6	1.4	4.8	1.0	4.0	3.0	-7.7
21230	12.1	15.6	8.6	4.5	14.8	14.5	1.2	0.9	1.2	0.3	5.7	5.4	-6.4
21231	11.0	25.8	9.8	2.5	27.3	22.9	2.5	3.8	5.1	0.6	3.2	2.6	-7.8
21234	6.7	6.7	4.5	1.3	9.4	14.1	1.3	1.4	4.2	0.3	0.7	0.4	-6.0
21236	0.0	0.0	0.0	ND	0.0	0.0	ND	ND	ND	ND	ND	ND	ND
21239	9.1	4.6	3.7	3.5	10.5	10.5	3.5	2.8	4.2	0.3	3.1	2.8	-6.0
21251	0.0	ND	ND	ND	ND	0.0	ND	ND	ND	ND	ND	ND	ND
21287	0.0	ND	ND	ND	ND	0.0	ND	ND	ND	ND	ND	ND	ND
Baltimore City	13.4	21.4	7.9	4.6	24.4	22.4	4.6	4.1	7.2	1.6	4.9	3.4	-8.5

ND = No data

For more information, visit <http://www.bniajfi.org>.

Number of Persons Enrolled in Drug Treatment Programs

Number of people in each zip code who received some type of drug treatment that year.

Source: Baltimore Substance Abuse Systems (BSAS)

Zip Code	2000	2001	2002	2003	2004	2005	2006	2007	2008	2009	2010	09-10 Change	00-10 Change
21201	421	405	479	385	514	599	448	468	504	501	408	-18.6	-3.1
21202	773	884	994	745	1,088	1,384	901	987	1,100	1,004	919	-8.5	18.9
21205	808	785	911	706	938	1,521	1,135	1,084	1,271	1,012	800	-20.9	-1.0
21206	493	537	600	490	627	836	677	672	721	663	622	-6.2	26.2
21207	466	478	628	448	577	677	441	471	485	396	372	-6.1	-20.2
21208	62	38	92	73	85	87	50	36	63	41	37	-9.8	-40.3
21209	58	53	62	65	56	52	52	46	54	38	29	-23.7	-50.0
21210	16	21	37	18	25	31	20	24	23	13	20	53.8	25.0
21211	319	375	371	252	350	499	360	322	380	323	280	-13.3	-12.2
21212	363	431	544	448	488	531	441	442	461	359	327	-8.9	-9.9
21213	1,352	1,485	1,641	1,254	1,691	2,564	1,925	1,788	2,096	1,665	1,433	-13.9	6.0
21214	218	215	253	176	227	344	286	250	295	255	244	-4.3	11.9
21215	1,629	1,953	2,198	1,479	2,224	3,254	2,498	2,491	2,369	2,112	2,162	2.4	32.7
21216	1,084	1,280	1,417	978	1,429	1,737	1,394	1,249	1,452	1,247	1,132	-9.2	4.4
21217	1,673	2,131	2,428	1,726	2,435	3,106	2,229	2,246	2,398	1,903	1,647	-13.5	-1.6
21218	1,377	1,553	1,806	1,360	1,915	2,637	1,948	1,807	2,137	1,512	1,339	-11.4	-2.8
21222	308	141	422	347	459	479	197	188	354	162	123	-24.1	-60.1
21223	1,319	1,397	1,720	1,379	1,921	2,566	1,829	1,769	2,011	1,476	1,149	-22.2	-12.9
21224	765	792	916	685	954	1,225	851	884	974	813	697	-14.3	-8.9
21225	392	426	525	562	745	1,068	752	682	903	534	570	6.7	45.4
21226	31	48	52	61	74	108	66	57	77	67	73	9.0	135.5
21227	131	99	184	154	185	231	ND	ND	182	93	86	-7.5	-34.4
21228	107	56	145	114	132	112	ND	ND	69	57	52	-8.8	-51.4
21229	764	840	962	678	956	1,226	924	842	966	717	630	-12.1	-17.5
21230	464	469	621	512	737	916	661	631	792	622	553	-11.1	19.2
21231	406	456	466	328	462	604	459	471	510	452	444	-1.8	9.4
21234	278	207	332	252	308	195	171	157	180	137	154	12.4	-44.6
21236	94	45	97	88	85	41	ND	ND	29	28	27	-3.6	-71.3
21239	348	378	387	306	375	523	416	378	437	329	362	10.0	4.0
21251	0	0	0	0	0	0	0	0	0	2	1	-50.0	ND
21287	0	0	0	0	0	0	0	0	0	0	1	ND	ND
Baltimore City	16,519	17,978	21,290	16,069	22,062	29,153	21,131	20,442	23,293	18,533	18,703	0.9	13.2

ND = No data

For more information, visit <http://www.bniajfi.org>.